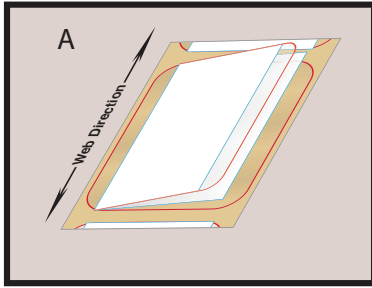
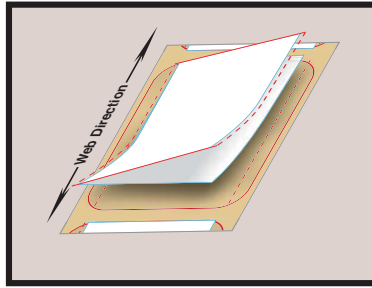


SINGLE FOLD



Single Fold Booklet
Resealable (non perforated)
4 panels for content

With booklet labels, you can add recipes, multiple languages, additional product instructions or warning information, drug facts, instantly redeemable coupons, nutrition and supplement information and much more.



Single Fold Booklet
Removeable (perforated)
4 panels for content

Booklets can be perforated for complete removal, partially perforated or left un-perforated for a re-sealable flap.

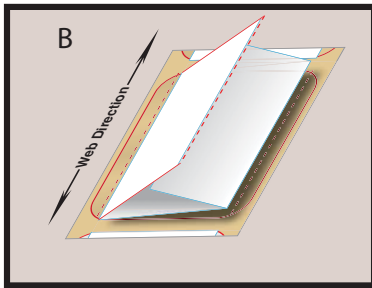
EXTENDED CONTENT LABELS

Our ECL booklets come in a variety of configurations to suit your application.

Extended content label booklets can be produced with 2 or 8 folded panels with a maximum of 4 fold-outs and up to 8 total colors. Our booklet labels can be printed in spot colors, metallic colors or high quality four color process.

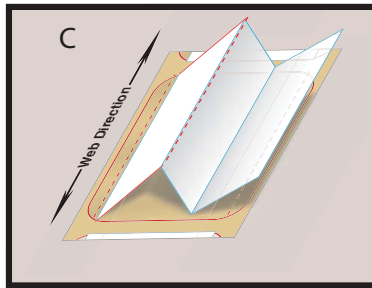
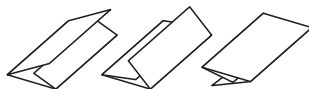
Contact one of our knowledgeable customer service representatives today and get your packaging noticed.

DOUBLE FOLD



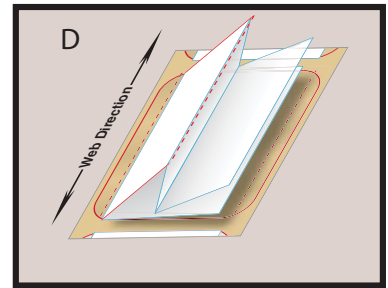
Letter Fold
6 panel standard

Booklet labels can have the left, right or center panel as the top of the label.



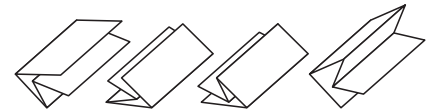
Accordion Fold
6 panels for content

Clear or white tabs always remain at the outer edges of the booklet label and remain on your product after the booklet is removed. This base material can be paper, film or foil.

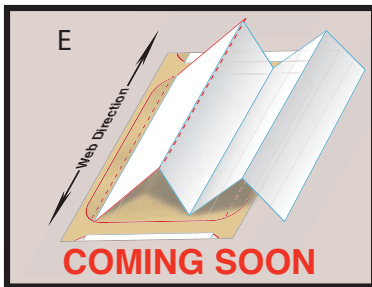


Double Parallel Fold
8 panels for content

Extended content labels provide the extra space you need without compromising your existing packaging.

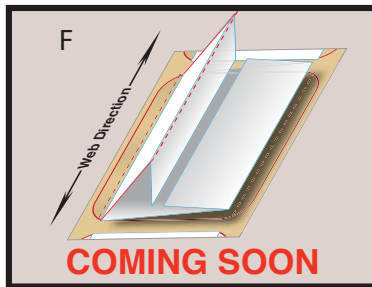


TRIPLE FOLD



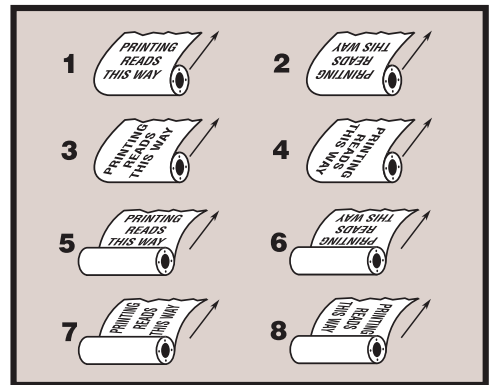
Accordion Fold
8 panels for content

Our Extended Content Booklet labels are an ideal option for adding additional information to your existing label packaging.



Gate Fold
8 panels for content

Rewind and copy orientation is a very important aspect when considering booklet labels and how they are applied and seen on your product.



IDENTIFY YOUR REWIND DIRECTION:

Based on copy orientation to the web, please select your rewind direction from the illustrations on the right. Please verify the rewind direction with your label applicator's specifications. If labels are to be hand applied to product, select the most suitable rewind for ease of application.